



Swage Wire Rope Sockets

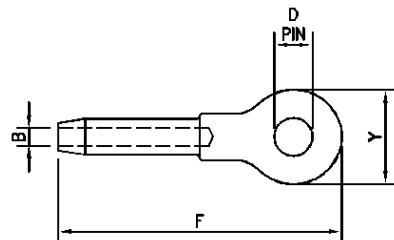
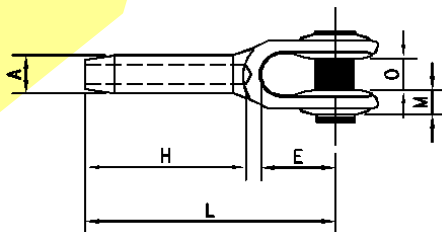
Caution: When attaching swage sockets to wire rope It is extremely important to follow recommended procedures. Read important warnings and information preceding fittings section.

Swage sockets are recommended for use on 6 x 19 or 6 x 37 IWRC regular lay ropes. They are also satisfactory on galvanized bridge rope. They are NOT recommended for use on fiber core or lang lay ropes. Spheroidized annealed for cold swaging. Sockets properly applied have an efficiency rating of 100%. This rating is based on the catalog breaking strength of wire rope.

Open Swage Sockets

A/S indicates the proper dimensions of A after swaging

Rope diameter in Inches	Dimensions in Inches										Approx Weight Each in Pounds	A/S
	A	B	D	E	F	H	L	M	O	Y		
1/4"	0.495	0.272	0.688	1.500	4.750	2.130	4.000	0.310	0.690	1.380	0.550	0.438
5/16"	0.770	0.339	0.812	1.750	6.250	3.190	5.310	0.410	0.810	1.630	1.100	0.688
3/8"	0.770	1.406	0.812	1.750	6.250	3.190	5.310	0.410	0.810	1.630	1.080	0.688
7/16"	0.982	0.484	1.000	2.000	7.810	4.250	6.690	0.500	1.000	2.000	2.300	0.875
1/2"	0.982	0.547	1.000	2.000	7.810	4.250	6.690	0.500	1.000	2.000	2.250	0.875
9/16"	1.257	0.609	1.190	2.250	9.560	5.310	8.130	0.630	1.250	2.500	4.600	1.125
5/8"	1.257	0.672	1.190	2.250	9.560	5.310	8.130	0.630	1.250	2.500	4.500	1.125
3/4"	1.545	0.796	1.380	2.750	11.690	6.380	10.000	0.750	1.500	3.000	7.800	1.375
7/8"	1.700	0.938	1.630	3.250	13.630	7.440	11.630	0.940	1.750	3.380	11.700	1.500
1"	1.975	1.062	2.000	3.750	15.630	8.500	13.380	1.030	2.000	4.000	17.800	1.750
1.1/8"	2.245	1.188	2.250	4.250	17.500	9.560	15.000	1.190	2.250	4.500	29.700	2.000
1.1/4"	2.525	1.328	2.500	4.750	19.440	10.630	16.500	1.190	2.500	5.000	36.000	2.250
1.3/8"	2.800	1.453	2.500	5.250	21.250	11.690	18.130	1.310	2.500	5.250	47.000	2.500
1.1/2"	3.075	1.578	2.750	5.750	23.250	12.750	19.750	1.440	3.000	5.750	65.000	2.750
1.3/4"	3.385	1.859	3.500	6.750	27.130	14.880	23.000	1.690	3.500	7.000	93.000	3.000
2"	3.935	2.109	3.750	8.000	31.440	17.000	26.750	1.810	4.000	8.000	145.000	3.500





Swage Wire Rope Sockets

Closed Swage Sockets

A/S indicates the proper dimension of A after swaging

Rope diameter in Inches	Dimensions in Inches								Approx Weight Each in Pounds	A/S
	A	B	C	D	E	H	K	L		
1/4"	0.495	0.272	1.440	0.750	0.500	2.130	4.38	3.5	0.34	0.438
5/16"	0.77	0.339	1.690	0.875	0.690	3.190	5.5	4.5	0.79	0.688
3/8"	0.77	0.406	1.690	0.875	0.690	3.190	5.5	4.5	0.78	0.688
7/16"	0.982	0.484	2.000	1.063	0.880	4.250	6.94	5.75	1.45	0.875
1/2"	0.982	0.547	2.000	1.063	0.880	4.250	6.94	5.75	1.38	0.875
9/16"	1.257	0.609	2.500	1.250	1.130	5.310	8.75	7.25	2.78	1.125
5/8"	1.257	0.672	2.500	1.250	1.130	5.310	8.75	7.25	2.75	1.125
3/4"	1.545	0.796	3.000	1.438	1.310	6.380	10.38	8.63	5	1.375
7/8"	1.7	0.938	3.500	1.688	1.500	7.440	12.13	10.13	7.5	1.5
1"	1.975	1.062	4.000	2.063	1.750	8.500	13.75	11.5	11.2	1.75
1.1/8"	2.245	1.188	4.500	2.313	2.000	9.560	15.25	12.75	15.8	2
1.1/4"	2.525	1.328	5.000	2.563	2.250	10.630	17.25	14.38	23	2.25
1.3/8"	2.8	1.453	5.250	2.563	2.250	11.690	18.88	15.75	31	2.5
1.1/2"	3.075	1.578	5.500	2.813	2.500	12.750	20.38	17	39	2.75
1.3/4"	3.385	1.859	6.750	3.563	3.000	14.880	24	20	52	3
2"	3.935	2.109	7.750	3.813	3.250	17.000	27.5	23	90	3.5

